

## ANCILLARIES

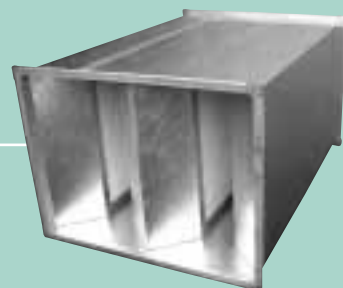


### Speed Controllers

Speed control is available via model QA auto-transformers.

### Silencers

Rectangular silencers are available for all sizes in 900mm lengths as standard.



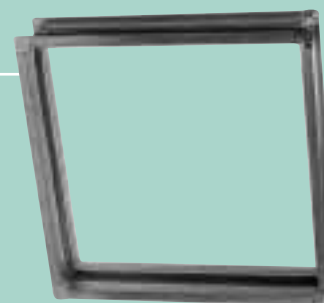
### AV Mounts

Rubber type suitable for fixing via corner holes provided in units.



### Flexible Connections

Fitted with proprietary flange each end to suit ductwork/fan.



## A STEP FURTHER

As well as the products covered in this leaflet, Air Vent Technology offers an extensive range of supply/extract units and associated ancillary equipment. Catering for air volumes up to 20m<sup>3</sup>/s and available for internal and external applications, most applications can be accommodated. Among the many variants we are able to cover are the following:

### Cases

Single skinned or double skinned with 25mm or 50mm thick panels  
Different panel infill including a combination of high-density rockwool and barrier mat to give high noise reduction.  
Differing panel skin materials including Stainless Steel, Aluminium and plastic coated sheet steel.  
Powder coat paint finish to any BS or RAL number to either internal, external or both surfaces.  
Casings supplied in 'flat pack' form to facilitate site assembly.

### Components

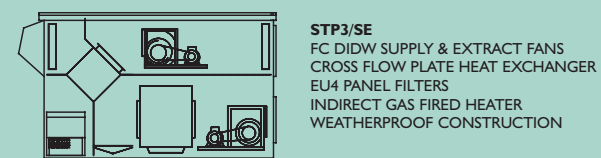
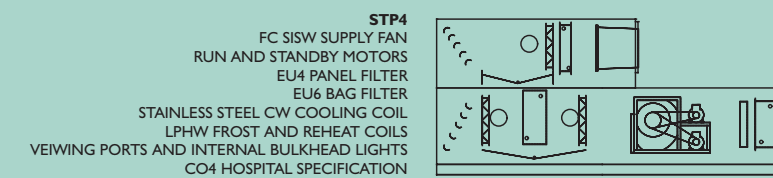
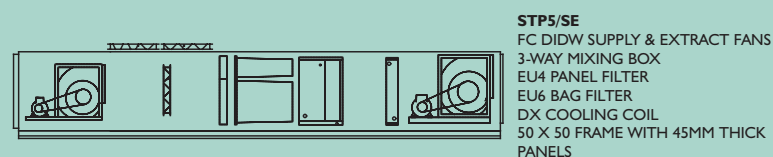
The following components can be readily catered for:  
Filters - Carbon, Hepa, Grease, Washable  
Run-a-Round coil systems  
Thermal wheels  
Gas fired heaters - Indirect and Direct  
Fans - SISW, Duplex (for low profile), Twin  
Motors - 1Ph, 2 Speed, Mounted out of airstream, fitted with standby.

### Specifications

Units can be designed to meet the requirements of the following specifications:  
DEO Spec 037  
CO4

### Controls

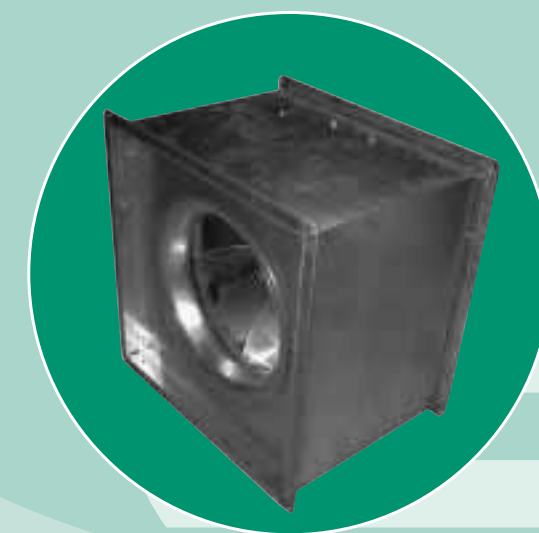
Any variation of controls package can be supplied ranging from simple pre-wiring of a motor to an external isolator to an in-built control panel pre-wired to motors, damper motors, sensors, etc..



We reserve the right to amend details without notification.



## QUALITY RANGE MIXED FLOW FAN



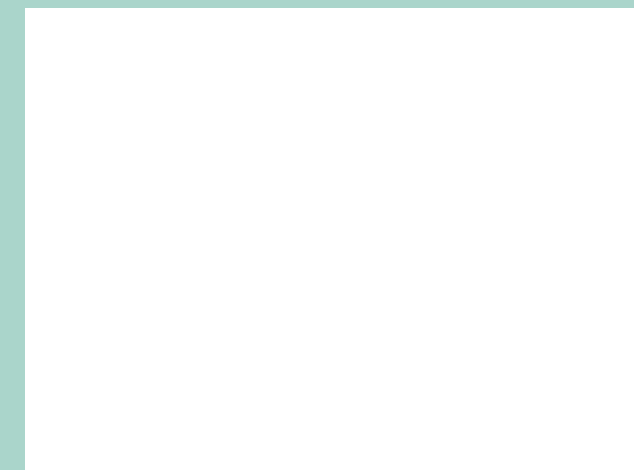
IP44 motor fitted with  
HOT SPOT protection

Flanged connections for quick  
and simple installation

All models fully speed  
controllable

Integral terminal box with  
two-way connection

Distributed by



Unit 1, Regents Court,  
Walworth Industrial Estate,  
Andover, Hampshire SP10 5NX  
Tel: 01264 356415  
Fax: 01264 337854  
email: [avt@globalnet.co.uk](mailto:avt@globalnet.co.uk)  
website:  
<http://www.airventech.co.uk>



Certificate No: GB9455

Leaflet Ref: 503/11/02

**UNIT SPECIFICATIONS**

**Cases**

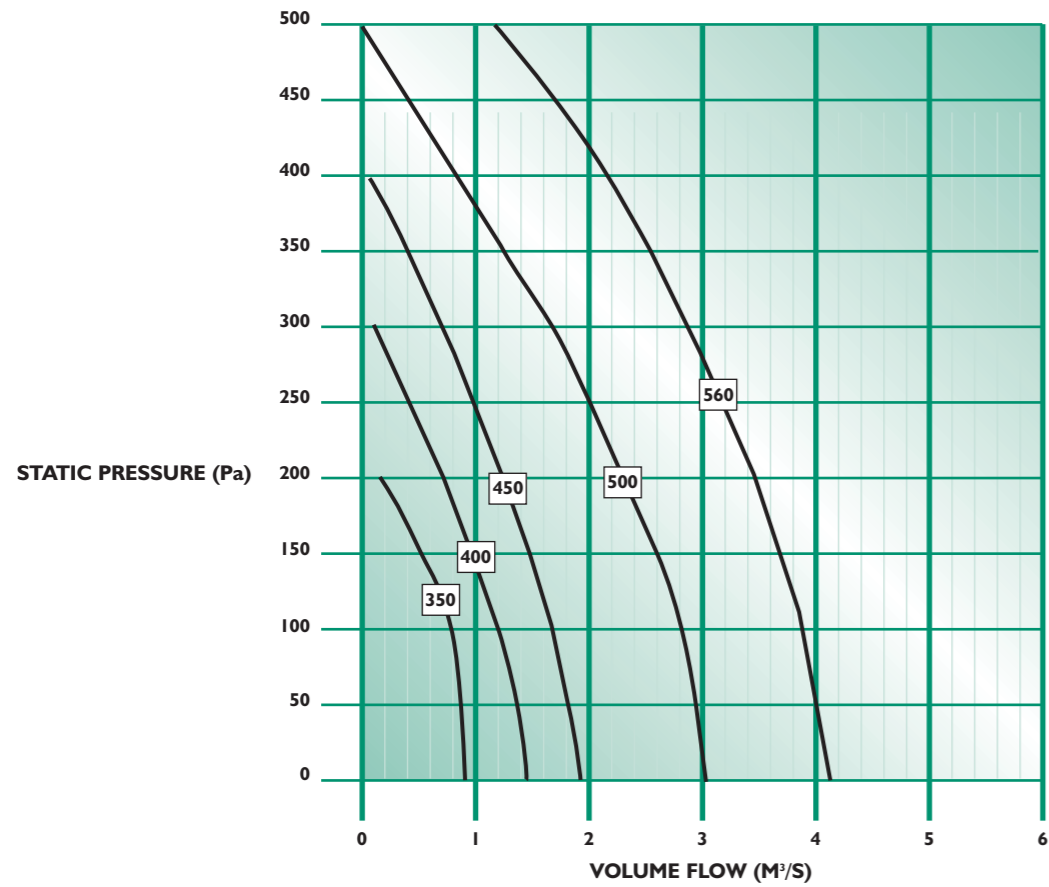
The all-new Square Mixed Flow fan is designed and built in Britain to suit the exacting requirements of the UK market. The range covers volumes up to 4.1m<sup>3</sup>s<sup>-1</sup> and pressures up to 650Pa.

The casing is constructed from 1.2mm thick galvanised sheet steel to create an extremely rigid fan unit.

All models come complete with motors that are protected to IP 44 and incorporate HOT STOP thermal motor protection to prevent the motor from overheating. These units also utilise external rotor motors, which have been chosen for their proven reliability, quality and performance.

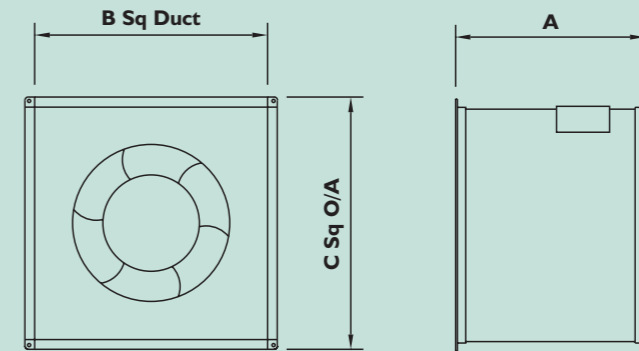
A unique integral terminal box allows for electrical connections on two sides of the casework to ensure the unit is flexible during installation.

**Performance**



Model	Motor (W)	Supply	FLC (A)	dB(A) @4m (Inlet)	Air flow volume (m3/s) against static pressure (Pa)											
					0	50	100	150	200	250	300	350	400	450	500	
QMF350/4/1	310	230V 1 Ph	1.35	55	0.97	0.91	0.77	0.53	0.17							
QMF400/4/1	520	230V 1 Ph	2.2	57	1.44	1.37	1.21	0.98	0.68	0.39	0.12					
QMF450/4/1	960	230V 1 Ph	4.3	59	1.94	1.85	1.7	1.48	1.26	1	0.66	0.37	0.1			
QMF500/4/1	1450	230V 1 Ph	6.1	61	3.03	2.92	2.79	2.57	2.31	2	1.65	1.23	0.84	0.5	0.18	
QMF560/4/3	2400	415V 3Ph	4.3	68	4.12	4.03	3.85	3.65	3.4	3.19	2.88	2.58	2.15	1.67	1.26	

**DIMENSIONS**



Model	A	B	C	Weight
QMF350	400	450	500	27kg
QMF400	435	500	550	43kg
QMF450	505	550	620	44kg
QMF500	535	661	731	59kg
QMF560	570	700	770	79kg

A full range of ancillary items is available to suit the QMF range. Speed controllers, silencers, anti-vibration mounts and flexible connectors are all available from stock.